

INTERIOR DESIGN[®]

SEPTEMBER
2014

new york nonstop

cityliving

second time around

firm: **dufner heighes** site: **noho**



In the apartment's living area, chairs in mahogany and cane flank a table in statuary marble.





Clockwise from top left: A mirror by Tyler Hays reflects a custom chandelier by Lindsey Adelman in the entry, which also connects private spaces to the living area. Its Francesco Binjare sectional sits on a custom silk rug. Bec Britain's chandelier hangs in the guest room. Dining chairs by William Katavolos, Douglas Kelly, and Ross Littell have been updated with frames in oiled bronze-plated steel.





cityliving

Tricked out in boho decor, brilliantly conceived by Dufner Heighes for a fictional young family with two imaginary children, the model apartment for a ground-up building in NoHo got snapped up right away. The buyers, in reality, were an older couple, suburban empty-nesters looking for a swish pied-à-terre in lieu of staying in a luxury hotel when visiting the city. And they asked Dufner

Heighes back to revamp and personalize the 2,600-square-foot space while making clear that they expected more than a repeat performance.

"These are our most design-savvy and adventurous clients," Daniel Heighes Wismer explains. "They really challenged us to find exceptional new things." Starting nearly from scratch significantly upped the stakes in the relentless

pursuit of downtown glamour.

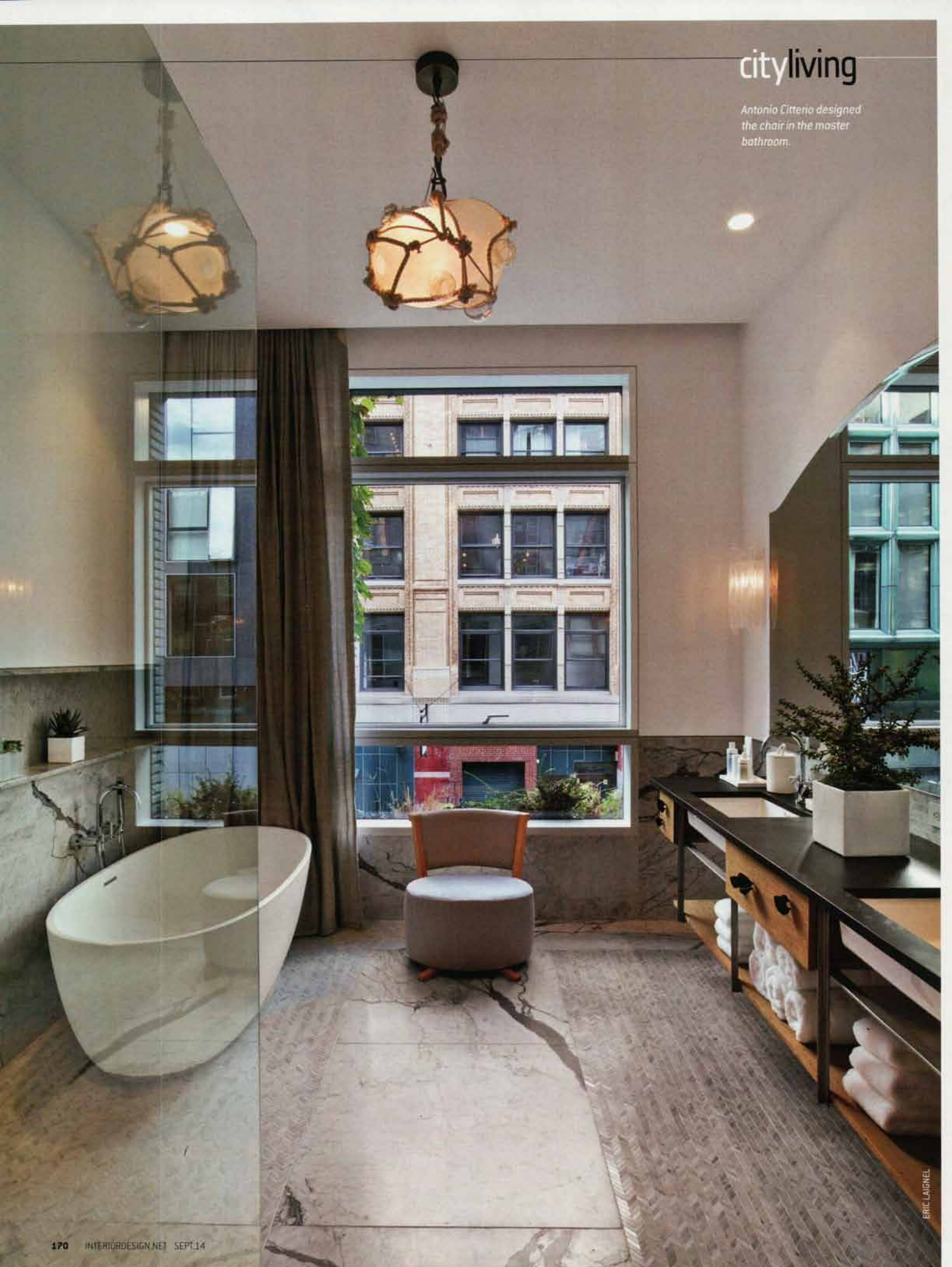
Today, the living area juxtaposes curvy yellow Vladimir Kagan lounge chairs with a sexy sectional covered in cream bouclé. "It's a party sofa," Greg Dufner says.

At a Tyler Hays dining table topped in ash wood, he and Wismer placed new versions of an iconic 1952 chair with a saddle-leather sling seat and a T-shape steel frame, the latter

now finished in a more luxurious oiled bronze. A large, multi-globed Lindsey Adelman chandelier joins one of Hays's signature round mirrors in the entry, where Dufner Heighes added a rustic-looking door to conceal the standard painted metal door of the elevator.

More angular than the Adelman chandelier are a pair by Bec Brittain. They visually unify the guest room and ➤

*Antonio Citterio designed
the chair in the master
bathroom.*





the study, physically unified by a new doorway to create a chic suite. Thanks to the chandeliers' soft LED tubes, the light is surprisingly warm.

Carrara marble, chosen by architect-developer DDG Partners, remains in the kitchen and master bathroom. To embellish DDG's double-sink vanity, Dufner Heighes replaced the standard drawer pulls with fanciful bronze butterflies. Try finding that at a hotel.

—Craig Kellogg

Clockwise from top right: Custom sconces by Elizabeth Lyons flank the mirror in the master bathroom. A new doorway with custom barn-style oak doors allows the guest room and the study to function as a self-contained suite. Ted Muehling pulls embellish the drawers of the master bathroom's existing vanity. In the study, an Arne Jacobsen lamp stands near a photograph of the Rolling Stones by Dominique Tarle.

FROM FRONT ELLI BOFFI: ARMCHAIRS (LIVING AREA). KHOURI GUZMAN BUNCE LININGER: SIDE TABLE. THROUGH JOHN SALIBELLO: BENCH (ENTRY). ALYSE SOLOMON: CUSTOM RUG. THROUGH RALPH PUCCI INTERNATIONAL: TABLE (ENTRY), LOUNGE CHAIRS (LIVING AREA). BOON: MIRROR (ENTRY), TABLE (DINING AREA), STOOL (BEDROOM). LINDSEY ADELMAN STUDIO: CUSTOM CHANDELIER (ENTRY), CUSTOM PENDANT FIXTURE (BATHROOM). EDNA THROUGH OOCNYC: SOFA (LIVING AREA). TAI PING CARPETS: CUSTOM RUG. JEAN DE MERRY: PENDANT FIXTURES (LIVING, DINING AREAS). CALVIN FABRICS: CURTAIN FABRIC. JH2 ONE TREE HOME: BED (BEDROOM). CHRISTIAN LAIGRE: TABLE. ATELIER ARETI: SCONCES. GANDIA BLASCO: RUG. BEC BRITAIN: CHANDELIER.

(BEDROOM, STUDY). GRATZ INDUSTRIES: CHAIRS (DINING AREA). DORNBRACHT: SINK FITTINGS (KITCHEN, BATHROOM), TUB FITTINGS (BATHROOM). WETSTYLE: TUB (BATHROOM). KOHLER CO.: SINKS. BBB ITALIA: CHAIR. KNOLLTEXTILES: CURTAIN FABRIC. ELIZABETH LYONS: CUSTOM SCONCES. TED MUEHLING: DRAWER PULLS. POLIFORM: SOFA (STUDY). GLAS ITALIA: COCKTAIL TABLE. EGG COLLECTIVE: SIDE TABLE. LOUIS POULSEN: LAMP. THROUGHOUT ARRIGONI WOODS: FLOORBOARDS. SKY-FRAME, WALCH: CUSTOM WINDOWS. OPUS AUDIO VISUAL CONTROL: AUDIOVISUAL CONSULTANT. POLYGON PROJECTS: WOODWORK. MARIE SAVATIERE: DRAPERY WORKSHOP.



cityliving

