

# INTERIOR DESIGN®

SEPTEMBER  
2011



new york forever



# setting the stage

firm: **dufner heighes**  
site: **noho**

**Even at a prime address,** you often have to offer extra enticements to potential buyers. The model apartment at 41 Bond Street breaks the "bland is better" mold with dynamic artworks, rich textures, and (gasp) some color. Many of the furnishings came from ateliers and showrooms only minutes away. ➤

*Edward Wormley's slipper chairs sit near an acrylic on canvas by Leah Tinari in the living area of the model unit at 41 Bond Street.*



cityliving





This short stretch of NoHo is now home to some of the most sought-after real estate in the city, including condominiums by Herzog & de Meuron and *Interior Design* Hall of Fame member Deborah Berke. The seven-unit building at number 41 was developed by DDG Partners and designed by its in-house architect, partner Peter Guthrie. DDG's CEO, Joe McMillan, calls the area the

"downtown gold coast."

The building's subtly striking exterior, clad in bluestone from upstate New York, influenced interior elements. Kitchen cabinets, meanwhile, reprise patterns in the stonework outside, albeit in maple. Guthrie explains that detailing marries vintage and contemporary, a theme that runs throughout.

Installing wainscoting flush to the walls gave it a sleek up-

date, and the same goes for contemporary takes on tray ceilings and cove moldings. "Flooring," Guthrie adds, "is another one of the glues that hold the project together." The oak underwent a series of stains, from dark to light, to bring out the color.

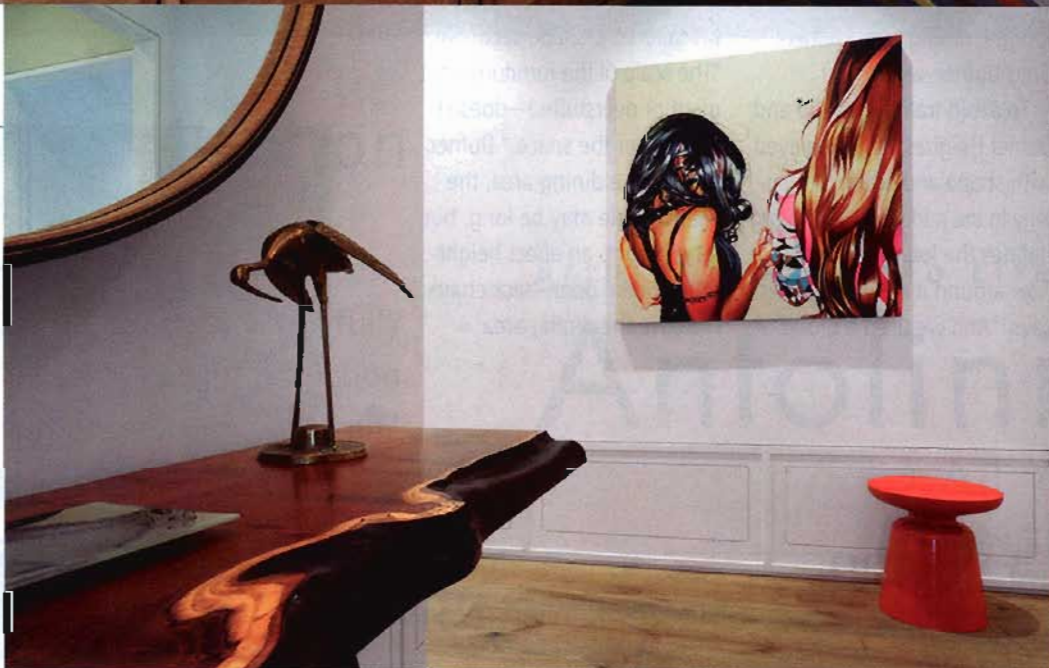
DDG had completed the interior finishes when Dufner Heighes was asked to furnish a 2,600-square-foot three-





## cityliving

**Clockwise from top left:** Wormley also designed the sectional in the living area, which shares a 45-foot-long room with the lounge, dining area, and kitchen. Italian marble tops custom white-oak cabinetry in the wet bar. In the entry, a cast-aluminum side table accompanies another acrylic by Tinari.







bedroom as the model unit. Most challenging was the fact that the public space is one long room with the fireplace slightly off-center. "We thought of it as separate areas—living, lounge, dining, and kitchen," Greg Dufner says.

To avoid traffic jams, he and Daniel Heighes Wismer played with shape and scale, particularly in the middle. "A round rug defines the lounge. You can flow around it easily," Wismer says. "And we used a group of

armchairs there, rather than a sofa, for a clubby feel."

The armchairs are by Edward Wormley, who also designed the living area's slipper chairs. They're paired with his tailored L-shape sectional. "The scale of the furniture—not giant or overstuffed—doesn't overpower the space," Dufner says. In the dining area, the walnut table may be long, but it feels light, an effect heightened by the open-back chairs.

Above the dining area, ▶

*From top: This Tinari acrylic is around the corner from the entry, with its porcelain pendant fixtures. A Lindsey Adelman chandelier hangs above a Tyler Hays table and seating in the dining area.*





hangs one of six chandeliers by Lindsey Adelman, whose workshop is in the same building as the Dufner Heighes studio. "Our intention was to work with local artisans," Wismer says. "More than just being local, though, things had to have a sense of craftsmanship."

Down the hall, past an enviably large dressing room, the master bedroom contains another Adelman chandelier.

It's installed over a bed that backs up to wallpaper by the artist Kiki Smith. Actual art—paintings and photography—comes from the contemporary gallery Mixed Greens.

A peppy number pattern papers one wall in the children's room. On the opposite wall, painted de rigueur white, is a colorful, gestural oil on canvas by Howard Fonda. "After we hung it here, the director



cityliving



**From top:** The master bedroom features an Adelman chandelier and wallpaper by artist Kiki Smith. Carrara statuary marble lines the master bathroom. The bedroom's dresser by Hays sits beneath C-prints by Coke O'Neal.





of Mixed Greens told us it's a skull," Dufner says. "I still think it can work." Downtown children like a little edge.

—Stephen Treffinger

**FROM FRONT DUNBAR FURNITURE:** CHAIRS, TABLE (LIVING AREA), SOFAS (LIVING AREA, MASTER BEDROOM). **LEE JOFA:** CHAIR FABRIC (LIVING AREA), WALLPAPER (BAR), SOFA PILLOW FABRIC (MASTER BEDROOM). **VISUAL COMFORT:** LAMPS (LIVING AREA, MASTER BEDROOM). **ROMO:** SOFA FABRIC (LIVING AREA). **ARONSON'S FLOOR COVERING:** CUSTOM RUG. **HOUSER:** SINK (BAR). **DORNBRACHT:** SINK FITTINGS (BAR, KITCHEN), SINK FITTINGS, TUB FITTINGS (BATHROOM). **BODW:** MIRROR, CONSOLE, RUG (ENTRY), TABLE, CHAIRS, BENCH (DINING AREA), BEDS, TABLES, DRESSERS (BEDROOMS), TABLE (BATHROOM). **WEST ELM:** SIDE TABLE (ENTRY), TABLE LAMP (CHILDREN'S ROOM). **DIFFUSE LIGHTING:** PENDANT FIXTURES (ENTRY). **LINDSEY ADELMAN STUDIO:** CHANDELIERS (DINING

AREA, MASTER BEDROOM). **SIGNORIA FIRENZE:** BEDDING (MASTER BEDROOM). **STUDIO PRINTWORKS:** WALLPAPER. **WET-STYLE:** TUB (BATHROOM). **ARTEMIDE:** SCONCE. **KNOLLTEXTILES:** CURTAIN FABRIC. **KVADRAT THROUGH MAHARAM:** SOFA FABRIC (MASTER BEDROOM). **CALVIN FABRICS THROUGH DONGHIA:** CURTAIN FABRIC (BEDROOMS). **THROUGH EBAY:** CHAIR (CHILDREN'S ROOM). **OSBORNE & LITTLE:** CHAIR FABRIC. **DANA BARNES STUDIO:** RUG. **IKEA:** LANTERN. **AREA HOME:** BEDDING. **MAHARAM:** WALLPAPER. **BROWN JORDAN THROUGH DESIGN WITHIN REACH:** CHAISES, TABLE (BALCONY). **THROUGHOUT SKY-FRAME, WALCH:** CUSTOM WINDOWS. **H. THOMAS O'HARA ARCHITECT:** ARCHITECT OF RECORD. **FUTURE GREEN STUDIO:** LANDSCAPING CONSULTANT. **ROBERT SILMAN ASSOCIATES:** STRUCTURAL ENGINEER. **PLUS GROUP:** MEP. **POLYGON PROJECTS:** WOODWORK. **MARIE SAVATIERE:** DRAPERY WORKSHOP.

*From top: In the children's room, cotton velvet covers a vintage chair. Wallpaper is by Alexander Girard. Chaise longues and a table by Robert Brown and Hubert Jordan outfit the balcony.*

cityliving

